

TAVOLA 1
Energia accumulabile per unità di volume e di peso
in volani di forma varia costruiti con materiale composito a fibra

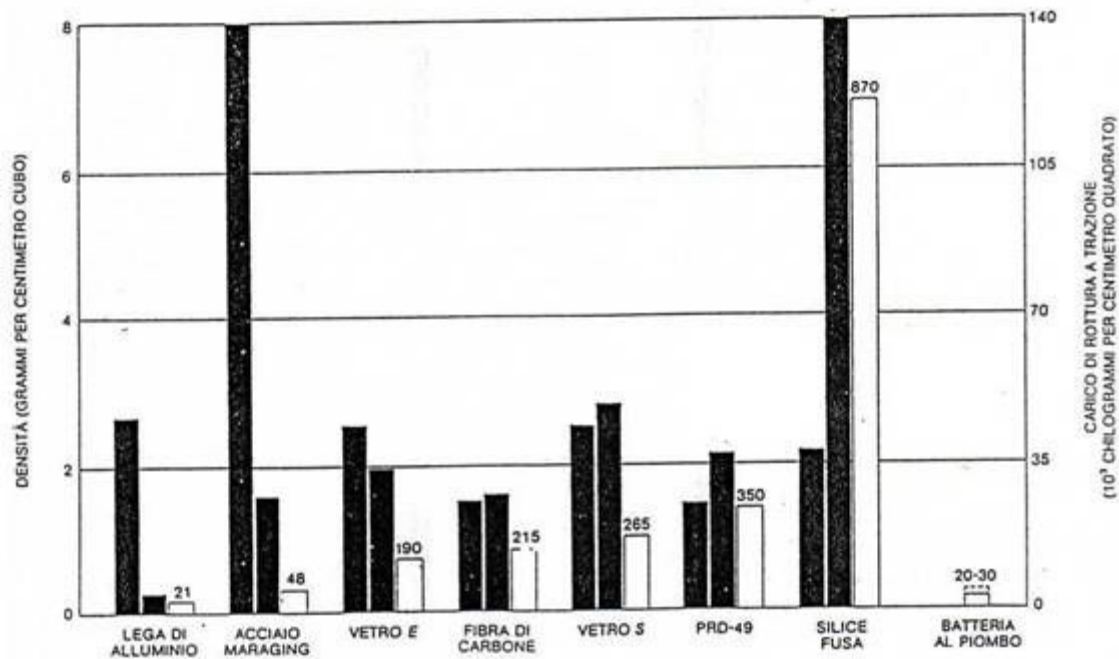
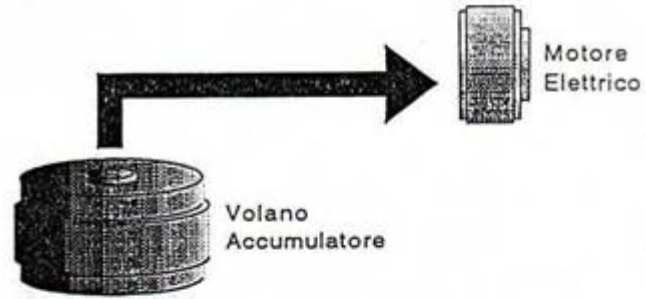


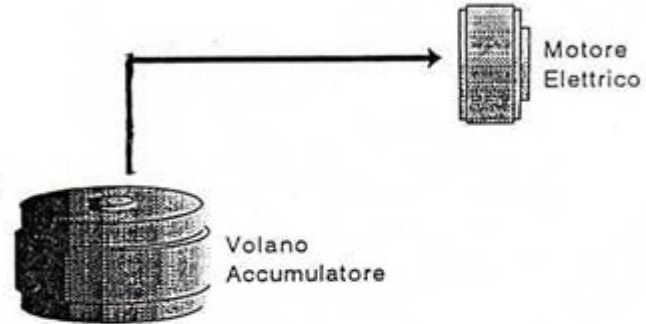
TAVOLA 2

Densità, carico di rottura e quantità di energia accumulabile per unità di peso
in volani costruiti con materiali diversi

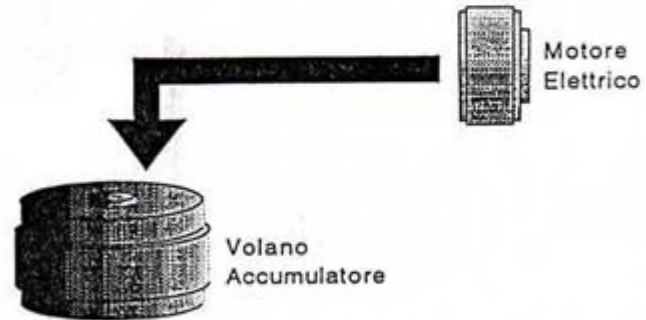
I - Accelerazione



II - Marcia a velocità costante

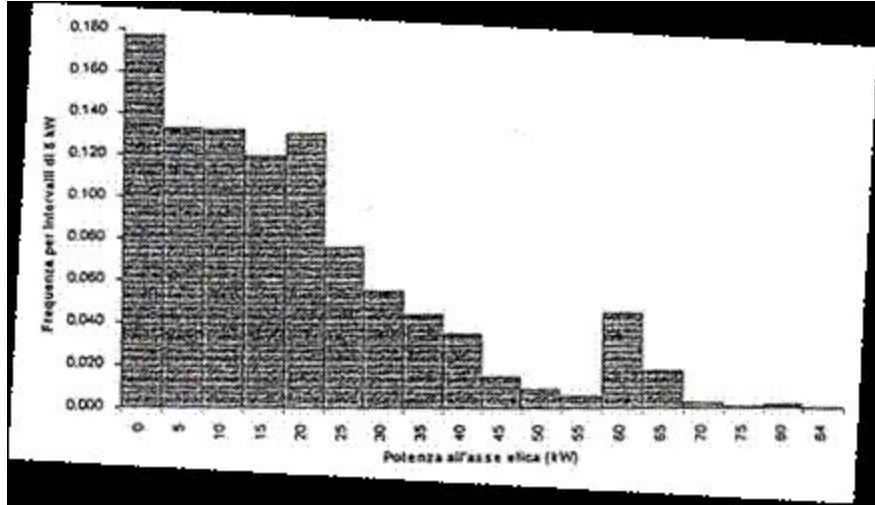


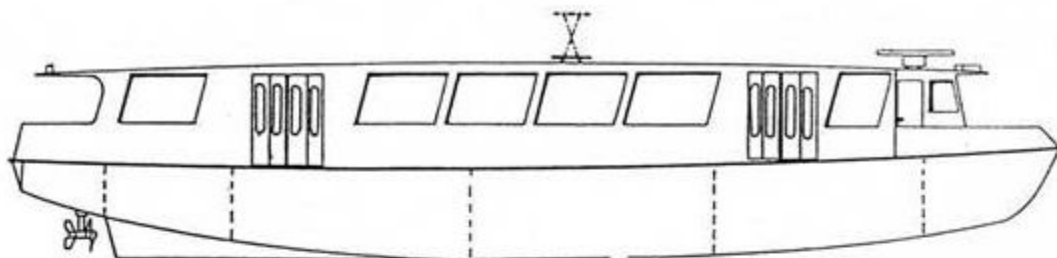
III - Frenatura



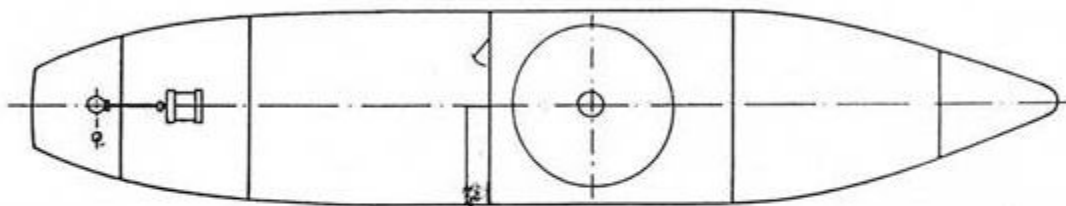
IV - Stazionamento



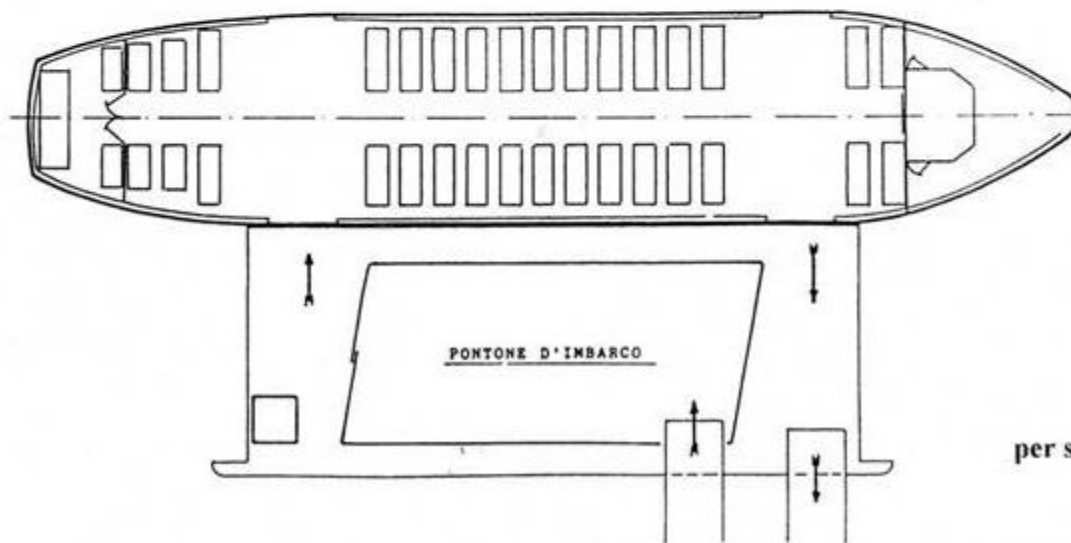




VISTA LONGITUDINALE



PIANO DI STIVA



PONTE DI COPERTA

TAVOLA 4

Battello a propulsione inerziale
per servizio pubblico di trasporto passeggeri
nella Laguna di Venezia

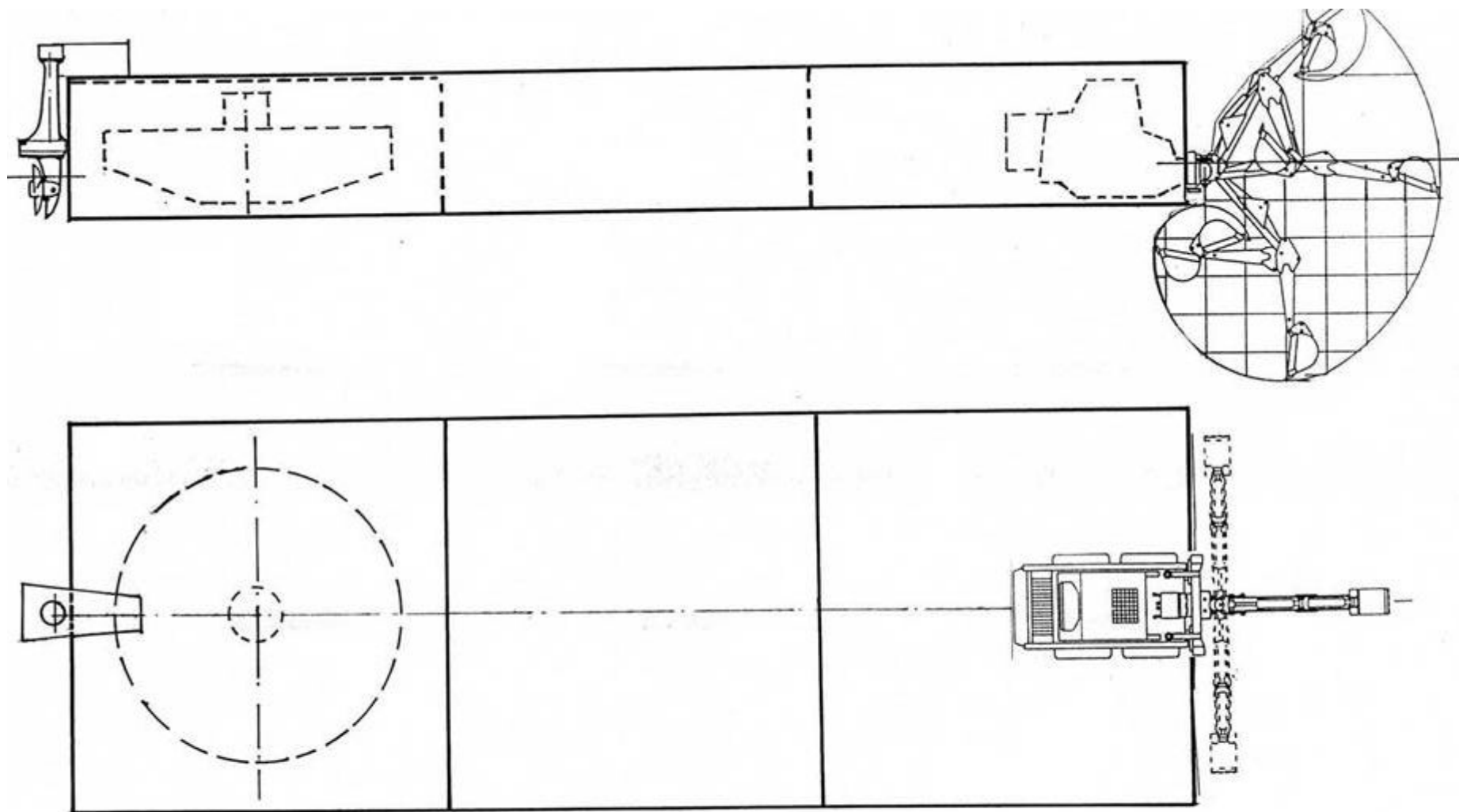


TAVOLA 5

Battello a propulsione inerziale

munito di apparecchiatura per escavazione in recessi semisommersi

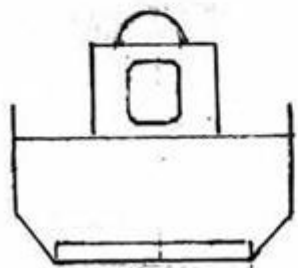
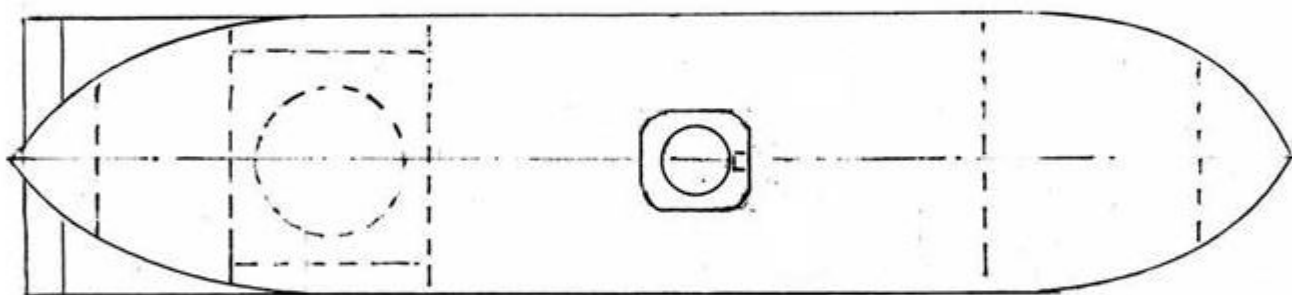
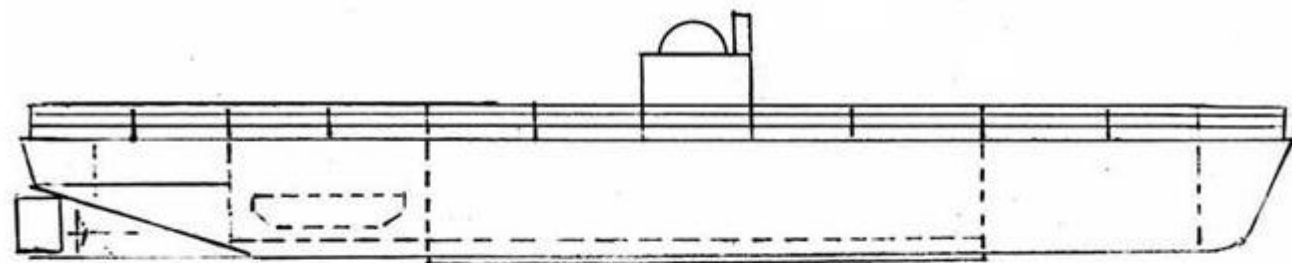


TAVOLA 6

**Battello a propulsione inerziale
per escursioni ed esplorazioni subacquee**